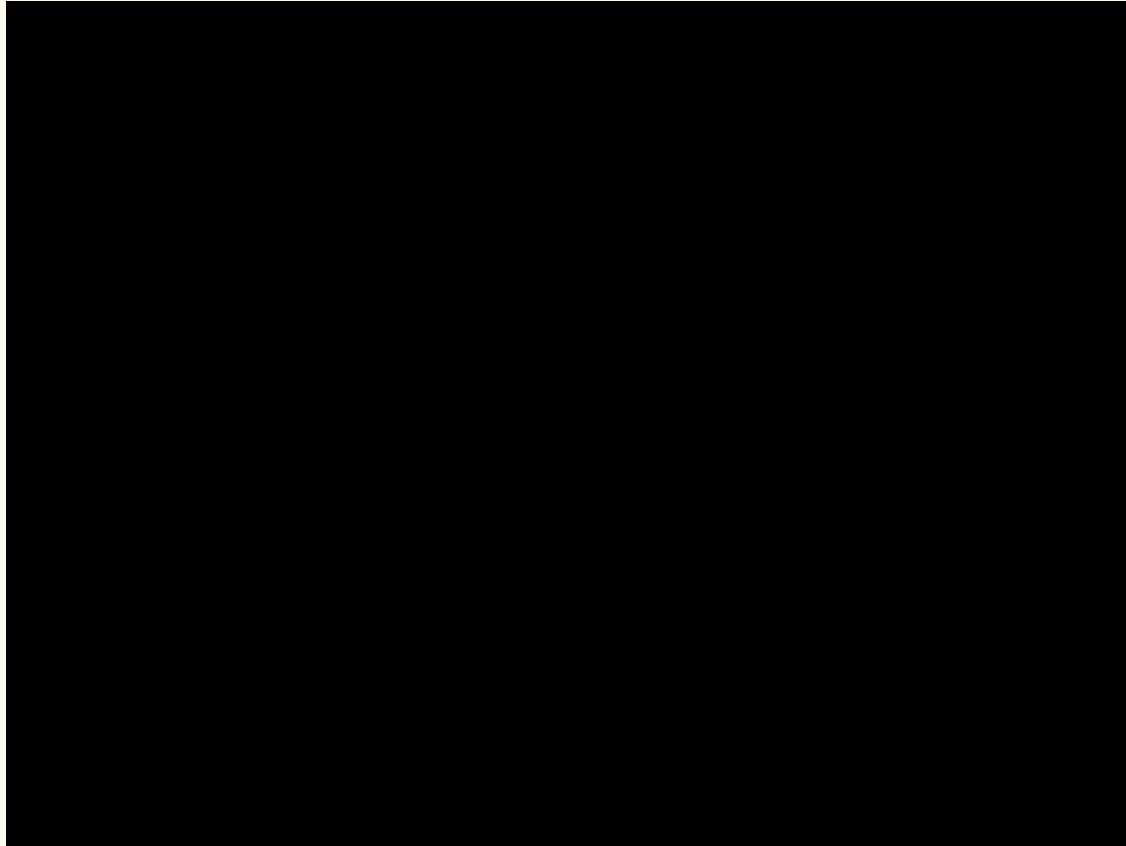




# February LoftPAC Meeting

# Spring Play



# Spring Play

Directed by Marcie Panian

Auditions: Feb 21-22, callbacks on 2/23

Tech Meeting: Feb 24

Show Dates: May 4-7

We'll send out a remind as soon as audition information is posted on the website.

Scripts available for checkout - see Mrs. Carlson

## THE PLAY THAT GOES WRONG



# Whoing Order

Whoing order:

Brooklin Giddings→Reece Loveridge→Howard Reinbold→Neela Estochen→Maddie Gerber→Selia Schaefer→Sydney segedi→Leslie Switala→Ava Duran→Lizzie Loveridge→grace smith→Layla Bagal→Kylie Estochen→Michael Edgerton→Riley Hestwood→Andrew→Sofia Berdie→Naomi Tesfaye→Addy Garrett→Miley Longie→Amelia Swarts→Sydney Hommez→Catie Russell→Ava→Audrey Bakst→Macey

If you didn't who/get  
whoed yet tell Hunter  
and he'll figure it out



# One Act Play Recap



Congrats to the cast & crew for  
advancing to section finals!



# Service Project Recap

Thank you to all who donated! We filled up two buckets worth of donations and Ava will drop them off tomorrow. Thank you for giving back to our community!



## Monologue Workshop + Q&A

### Student Broadway Opportunity



with **Steven Lee Johnson**  
Dill Harris in *To Kill a Mockingbird*

## Event Information

What makes a monologue stand out? As actors, how can we connect with the material and give our best performance every time? We can't wait to delve into the minutiae of monologues with Steven Lee Johnson at this special student workshop! Join us on February 15th for this student Broadway opportunity that includes a Q&A and a chance to get feedback on your monologue. Then, catch Steven as Dill Harris in *To Kill A Mockingbird* at the Orpheum from February 14-19!

**Slots for feedback are limited, so sign up now!**

**Date:** Wednesday, February 15th  
5:00pm-6:00pm

**Location:** The Hennepin Event Center  
900 Hennepin Ave, Minneapolis, MN 55403

**Register:** Link in bio!

**STEVEN LEE JOHNSON** (Dill Harris) (he/him). Broadway: *To Kill a Mockingbird*. Off-Broadway: *Nantucket Sleigh Ride* (Lincoln Center Theater). Regional: *Macbeth*, *A Midsummer Night's Dream* (Chicago Shakespeare Theater); *Indecent* (Yale Repertory Theatre); *Beautiful Thing* (Theater Latté Da); *Mary's Wedding* (Chester Theatre Company); *Clybourne Park*, *Uncle Vanya* (Guthrie Theater). TV: *Chicago Fire*, *Masterclass*, HBO. Johnson is a Presidential Scholar in the Arts. Education: Interlochen University of Minnesota/ Guthrie; MFA, Yale School of Drama.

Register [HERE](#)



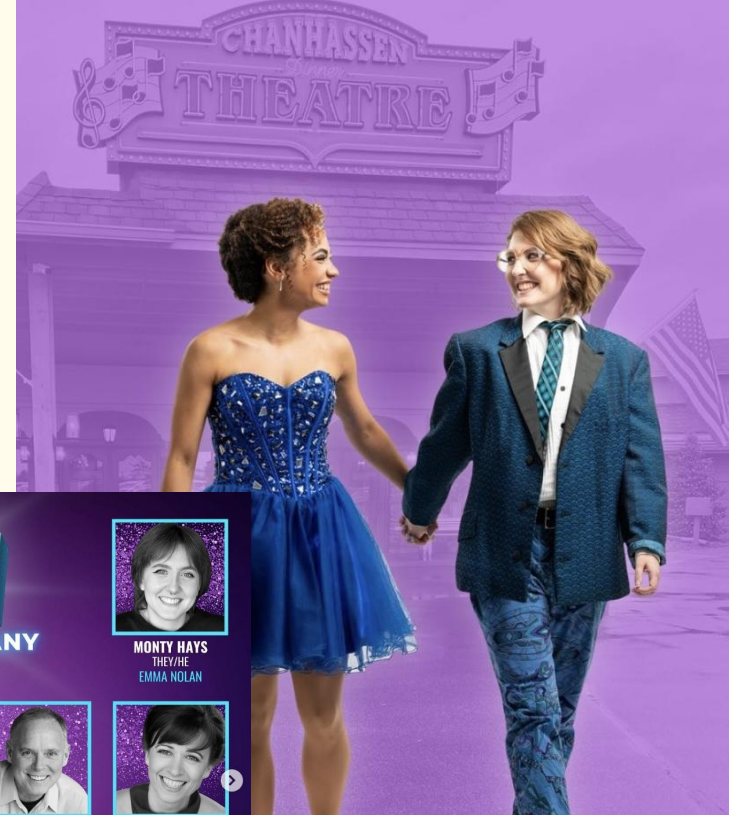


# The Prom

**SAVE THE DATE**  
**Chanhasen Dinner Theatre**  
**Friday, April 21st @ 6pm**  
(time does not include travel)

Space is limited and tickets are non-refundable.

We will send out a remind when tickets are available on the Loft Stage Store.







# Painting with Joe & George

**SAVE THE DATE**

**Wednesday, March 29th @ 6:30pm**

Wear painting clothes, snacks and painting materials will be provided


Learn new painting techniques and leave with a finished painting.

All are welcome but space is limited. A signup will be shared at the March LoftPAC meeting.



[www.joethomasjohnson.com](http://www.joethomasjohnson.com)





# Guess what time it is?

Time to fill out thespian points (please)

# Thespian Points

- Check your google sheet right now! Shared with your apps account, (last name, first name)
- How many points do you have?
- Thespian points also help us track lettering, so if you want to letter, track your points!
- You must be involved in all three production to letter.

Take out your  
phone and  
submit your high  
school theatre  
activities



**[bit.ly/erhsthespian](https://bit.ly/erhsthespian)**

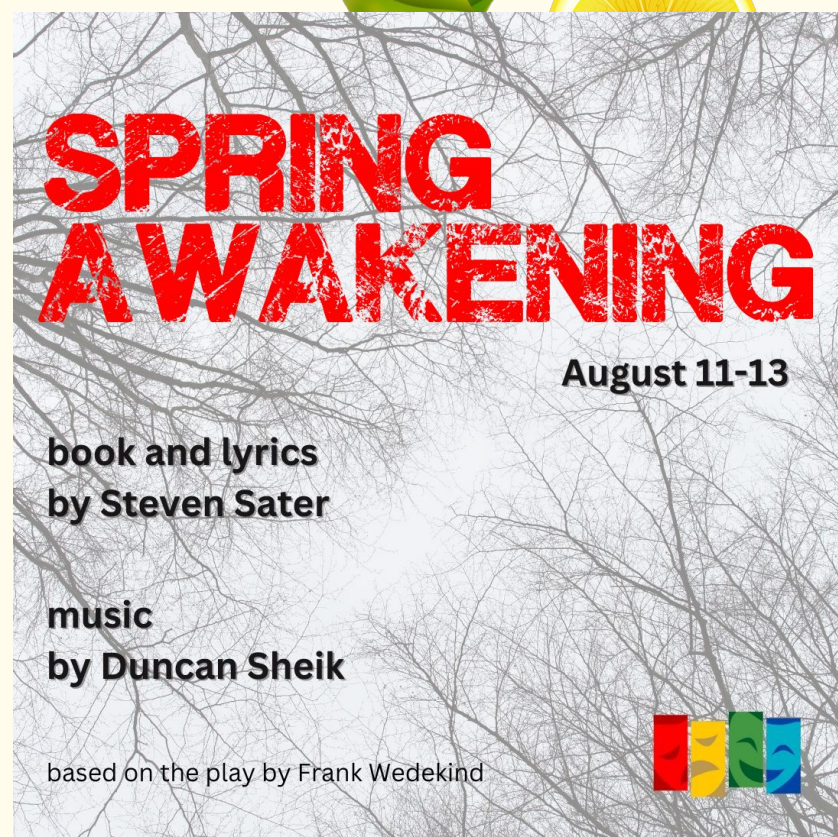


# Summer show

**Our summer stock show is  
*Spring Awakening!***

Auditions will be held both in-person and online, May 15-16. Further audition details and technical theatre opportunities will be posted soon. Rehearsals will run July 17-August 10 and shows will be performed at Oltman Middle School August 11-13.

*open to artists ages 16-22*



Content warning: This musical contains mature content that may not be suitable for all performers and audience members. Spring Awakening contains explicit language, sexual situations, and scenes depicting violence and suicide.





The background is a light cream color with various citrus-themed illustrations. At the top, there are several green leaves and slices of lemons. On the left side, a lemon slice is at the top, followed by a single green leaf, and then a splash of orange juice with several small droplets. On the right side, a lemon slice is at the top, followed by a single green leaf, and then a lemon slice at the bottom. At the bottom, there are more green leaves and a few small orange droplets.

# Next meeting Friday, March 3rd

Be there or be square